



BOTSWANA • MOZAMBIQUE • NAMIBIA • SOUTH AFRICA • UGANDA • ZIMBABWE

CHAPUNGU-KAMBAKO SAFARIS

2023

Hunt in untamed Africa

AN EAGLE'S VIEW

Welcome to Chapungu-Kambako Safaris, one of the leading safari outfitters in Southern and Central Africa. We offer a large selection of dangerous as well as plains game safaris to the most discerning hunter that prefers fair-chase hunts on some of the largest and best managed hunting concessions in Botswana, Mozambique, Namibia, South Africa, Uganda and Zimbabwe.

Our joint venture is run by a group of independent, reputable, passionate and highly skilled Outfitters and Professional Hunters whose goal is to provide the best possible African safari to each guest. Each of our outfitters has more than a decade's hunting knowledge and experience, and this is evident in the superbly located world-class camps and safaris that we run.

Chapungu-Kambako Safaris specialise in making every safari a unique and personalised one according to the individual needs and requirements of our clients. No request is impossible for us and we are proud of our long list of return clientele that bares testimony to our success.

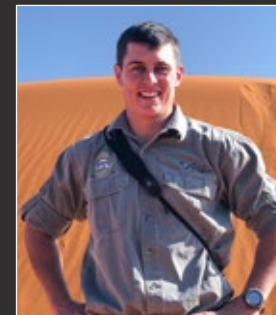
We are passionate about our wildlife, our industry and our continent and we want to share this with you. If you are a species collector, big game hunter or taking the family on a hunting holiday, we can assure you the opportunity to hunt what you are after whilst having the adventure of a lifetime.



Jacques Hartzenberg



Jumbo Moore



Nicolai Raubenheimer



Uys Schickerling



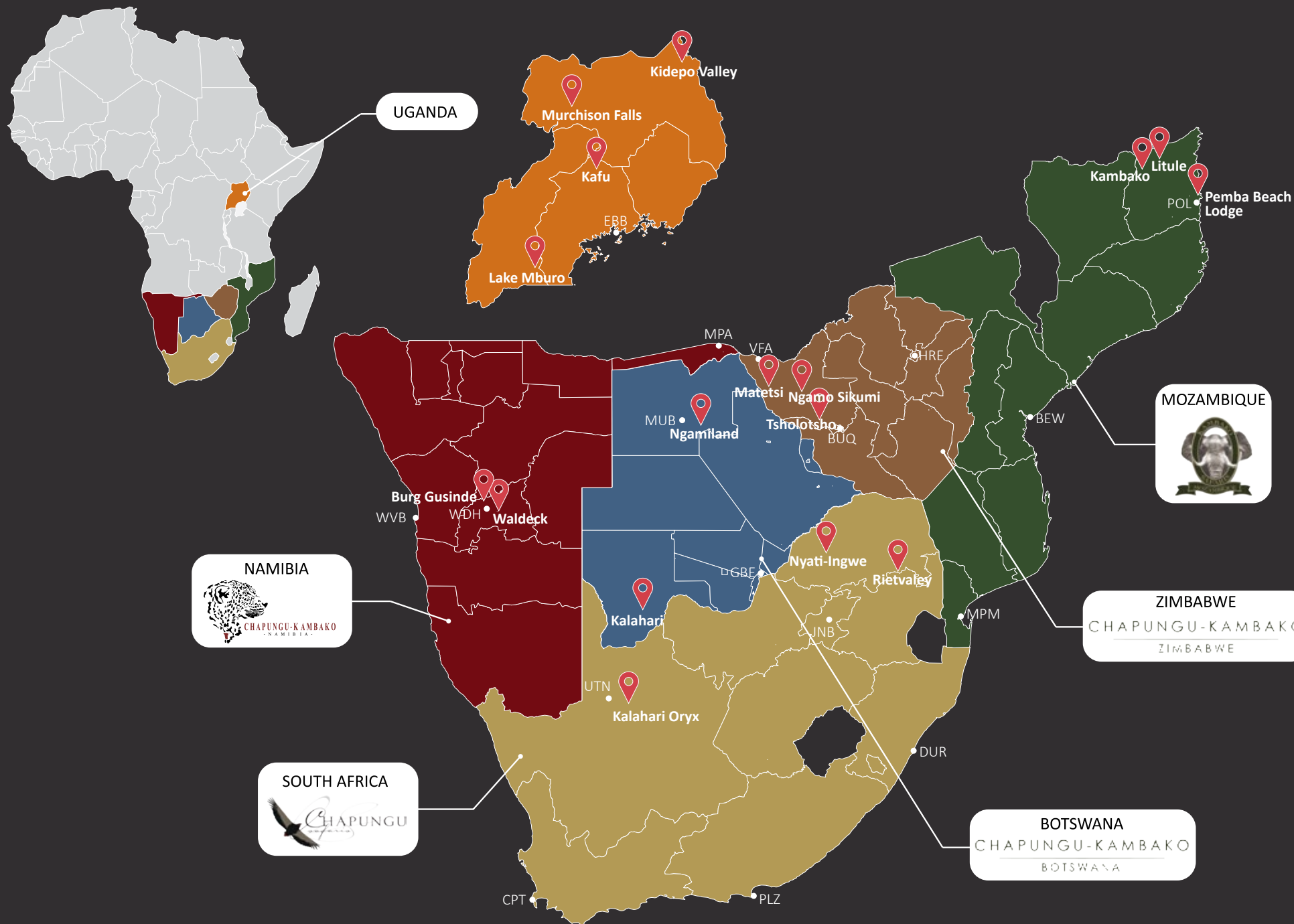
Darren Ellerman



Ryan Cliffe



Paul Wellock



BOTSWANA

CHAPUNGU-KAMBAKO BOTSWANA

Botswana is topographically flat and consists mainly of the Kalahari Desert in which the world's largest inland delta, the Okavango Delta, sinks. It is one of the least densely populated countries in the world leading to its flourishing natural wildlife. Botswana has diverse areas of habitat - in addition to the delta and desert, there are grasslands where other plains game such as blue wildebeest and impala are found.

Southern Botswana is known for its large cats. We offer the opportunity to hunt leopard with dogs together with native Bushmen as your trackers. It is a unique experience found nowhere else and it is one of the most exhilarating hunts you will ever do. In addition, the unspoilt nature is at its finest in Northern Botswana with an abundance of good quality elephant trophies and a great number of common plains game species. One can expect rich wildlife, magical sunsets and novel hunting experiences in this unique country.

Hunting areas: 1,280,000 acres (520,000 hectares)

Port of Entry: Maun International Airport (MUB)

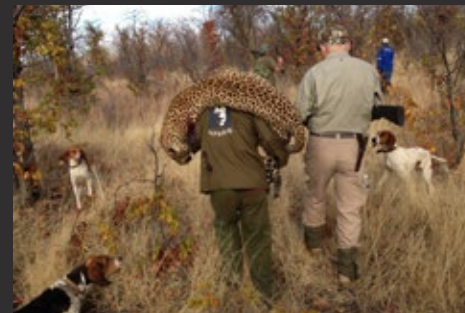
Hunting season: April to November

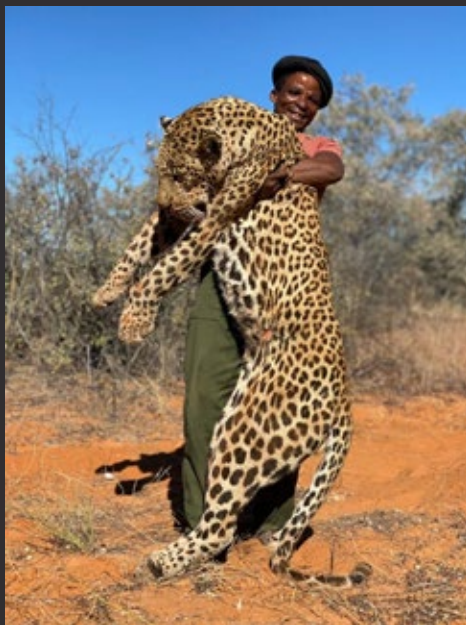
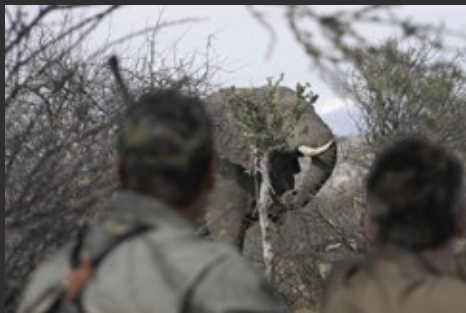
Import of guns: Maximum of 3 firearms and
100 rounds of ammunition per firearm

Dangerous game: Elephant, Leopard & Buffalo

Best suited for: Large elephant and leopard safaris

Malaria risk: Low to high risk depending on season and area



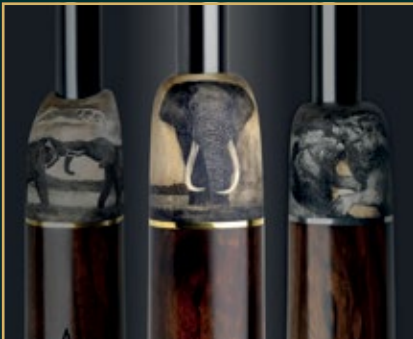


TROPHY GALLERY - BOTSWANA 2022





Griesgasse 3 · 9170 Ferlach
AUSTRIA
+43 42 27 2283
office@fanzoj.com
Instagram @johann_fanzoj
www.fanzoj.com



*Worldbest Hunting Rifles
for the Finest Experience*

MOZAMBIQUE

KAMBAKO SAFARIS

Kambako Safaris' concessions and hunts are continuously labelled as the best in Mozambique and the appeal lies in the ethical "old" African-type safaris led by a team of Professional Hunters, yielding exceptional trophies from at least 25 different species of common and endemic animals. We operate on more than 1,400,000 acres in the Niassa situated in northern Mozambique and bordering Tanzania. In percentage terms, Kambako Safaris control over 23% of the Mozambican quota for conservation areas. These unspoiled concessions' western boundary for 70 miles is the meandering Lugenda River, the main lifeblood of the region. It is every big game hunter's ultimate dream as it is home to four of the Big Five as well as hippo and crocodile. There are healthy numbers of endemic and rare species, including the Niassa wildebeest, Böhms zebra, Roosevelt sable and Livingstone suni to name a few.

Several international and domestic commercial flights fly to Pemba from where you will be escorted through to your private one-hour charter flight to the camps' dirt airstrips. Kambako Safaris furthermore boast with an idyllic lodge on one of the pristine beaches of Pemba. Here you can enjoy a day or two of relaxation after your safari. Kambako Safaris is definitely a must-do for the individual seeking a wild off-the-grid safari.

Port of Entry: Pemba International Airport (POL)

Hunting season: June to November

Import of guns: Maximum of 3 firearms and
100 rounds of ammunition per firearm

Dangerous game: Lion, Leopard, Buffalo, Hippo, Crocodile & Hyena

Malaria risk: High risk area

Best suited for: Buffalo and leopard safaris





KAMBAKO MAIN CAMP

Within the unspoiled, pristine Miombo woodlands of the Niassa Reserve, one can hunt lion, leopard, buffalo, hippo and crocodile as well as a variety of endemic plains game species including the Niassa wildebeest and Roosevelt sable. Kambako main camp is superbly located high up on the Lugenda River's banks with the most amazing views towards the west. It offers luxury thatched air-conditioned ensuite units.

- 600,000 acres (242,800 hectares)
- Five thatched air-conditioned chalets with ensuite bathroom
- Thatched semi-open communal lounge, dining, bar & boma
- Infinity Pool
- Wi-Fi, power, air-conditioning & daily laundry
- 1,000-yard Private dirt airstrip

LITULE CAMP

Situated in the northeast of the Niassa Reserve, this camp boasts over 31 miles of Lugenda River frontage. The ensuite canvas tents and communal lounge are set amongst Baobabs, large chestnuts and fig trees.

- 800,000 acres (323,700 hectares)
- Three canvas tents with ensuite bathroom
- Thatched semi-open communal lounge, dining & bar
- Wi-Fi, generator power & daily laundry
- 1,000-yard Private dirt airstrip

TROPHY GALLERY - MOZAMBIQUE 2022





NAMIBIA

CHAPUNGU-KAMBAKO NAMIBIA

Chapungu-Kambako Safaris Namibia offers exhilarating and memorable hunting in one of Africa's most unique countries. It is a country filled with extremes from weather, typography to wildlife and ultimately hunting experiences. We have access to more than 45,000 acres of owner-managed land and concessions situated in the central mountainous areas around Windhoek. This vast country offers challenging free-range hunting opportunities, making it an ideal destination for the serious hunter. Join us on a safari for the Big Five or other indigenous species only found in Namibia like the Damara dik-dik or Black-faced impala.

You can expect tailored safaris fit for every taste and budget: from luxury lodges to proper Livingstone-style tented safaris. Your hosts will ensure a welcoming, comfortable and relaxed stay while looking after your every need. And after an exciting day's hunt you can enjoy a well-deserved drink with friendly company beside a campfire, whilst the sun sets behind the stark landscape of this enchanting country.

Port of Entry: Hosea Kutako International Airport (WDH)

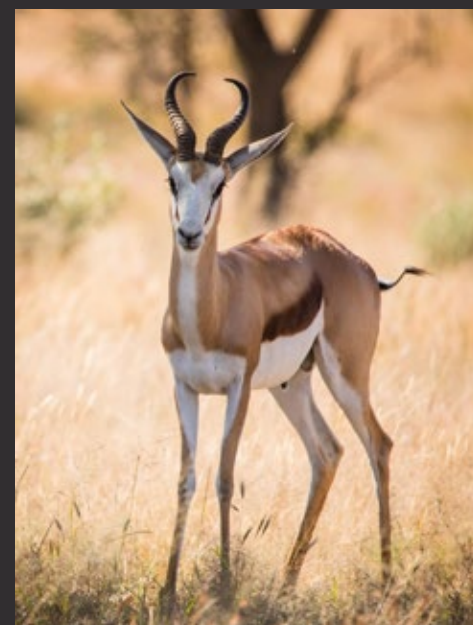
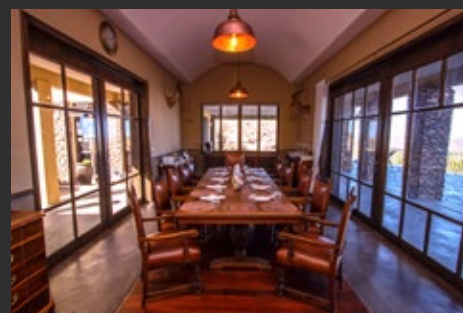
Hunting season: February to November

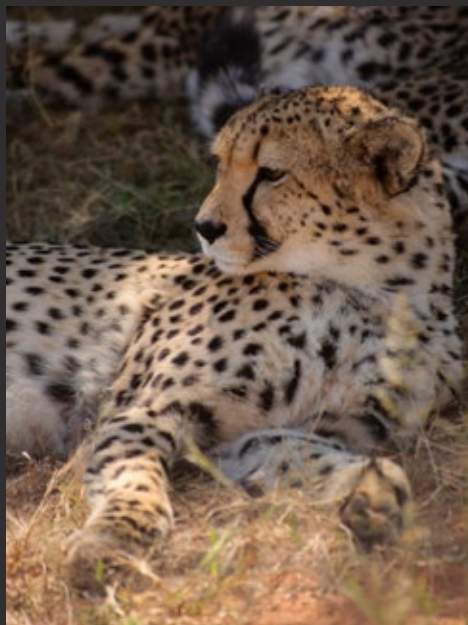
Import of guns: Maximum of 2 firearms and
80 rounds of ammunition per firearm

Malaria Risk: No risk areas

Dangerous game: Elephant, Leopard, Buffalo, Hippo, Crocodile,
Hyena & Cheetah

Best suited for: Leopard, Cheetah and Plains Game safaris





BURG GUSINDE

Named after a German soldier who settled here, the farmhouse still has the nostalgic historical style of the early 20th century. Trophies available here includes leopard and cheetah as well as waterbuck, greater kudu, Cape eland, common impala, giraffe, blue and black wildebeest, Hartman zebra, oryx, hartebeest, steenbuck, warthog, klipspringer, duiker and brown hyena.

- 24,700 acres of rocky mountain areas and savannah
- Four bedrooms with en-suite bathroom
- Main lodge houses the lounge, bar and dining area
- Infinity pool
- Wi-Fi, electricity, mobile reception and daily laundry
- 44 miles from Hosea Kutako International Airport (WDH)

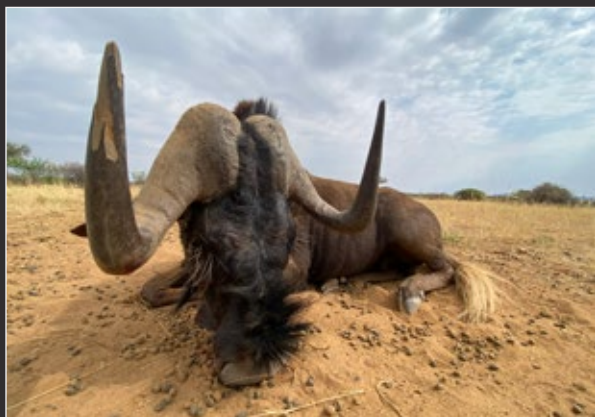
WALDECK

Acquired in November 2022, Waldeck offers ample opportunities to hunt leopard, cheetah and a variety of plains game. Upgrades and a brand-new luxury hunting lodge for 2023 are being planned. Currently, the accommodation will consist of a temporary stylish and comfortable canvas tented camp with all needed amenities.

- 22,200 acres (8,900 hectares)
- Canvas tented camp with ensuite bathrooms
- Canvas tented communal lounge, dining & bar
- Wi-Fi, power, mobile reception & daily laundry
- 45 miles from Windhoek

TROPHY GALLERY - NAMIBIA 2022





SOUTH AFRICA

CHAPUNGU SAFARIS

South Africa, at the southernmost tip of Africa, is the premier hunting destination on the continent. It can be regarded as one of the most diverse countries in the world. With 11 official languages, a conglomeration of cultures, more than 45 huntable species and landscapes varying from mountainous terrain to savannah grasslands to the arid Karoo region and everything in between, is this country any hunter's dream destination. Here we have access to over 260,000 acres of prime hunting ground and we can ensure the success of any dangerous and plains game safari.

Chapungu Safaris furthermore offer a complete and personalised experience for the individual who is seeking an exclusive safari. Our lodges reflect each area's unique culture, local cuisine and natural beauty while our professional hunters, trackers and skinners are of the most experienced in the hunting industry. We make use of preferred private charter and transfer companies as well as rifle import/export agents to assist with all other travel related arrangements. South Africa is the ideal destination not only for the hunter but also for his companions.

Port of Entry: OR Tambo International Airport (JNB) or
Cape Town Airport (CPT)

Hunting season: All year round

Import of guns: Maximum of 4 firearms and
200 rounds of ammunition per firearm

Dangerous game: Lion, Rhino, Buffalo, Hippo & Crocodile

Best suited for: USFWS-exportable lion, rhino & buffalo





KALAHARI ORYX GAME RESERVE

This rare South African gem stretches over 212,000 acres in the Northern Cape Province, making it the largest privately owned hunting concession in the country. The reserve forms part of the Kalahari Desert (meaning "large thirst" in Tswana). However, in contrast to this arid landscape is this a hidden oasis for the most discerning hunter. Four of the Big Five can be found roaming this landscape and apart from other plains game such as kudu, springbuck, oryx and eland, one can also find sable, roan and nyala. Being malaria free, having our own asphalt airstrip and having the lodge to yourself makes Kalahari Oryx one of the most exclusive hunting destinations in South Africa.

The recently renovated luxury private lodge boasts four air-conditioned ensuite rooms overlooking the beautiful landscape. Traditional three course meals prepared by our chef are served in the dining/lounge area that leads onto a walkway to the decked swimming pool. Special desert sundowners in the dunes are also a great specialty offered by our friendly staff.

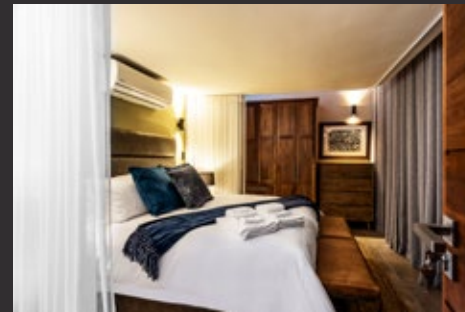
- 212,000 acres (85,000 hectare)
- Four luxury air-conditioned rooms with ensuite bathroom
- Thatched lounge, bar and dining area
- Pool
- Wi-Fi, electricity, mobile reception, air-conditioning and daily laundry
- 80 miles from Upington International Airport (UTN)
- Private tarmac airstrip
- Malaria FREE

INGWE-INYATI RESERVE

Situated in the Waterberg, this 12,500 hectares (33,000 acres) of scenic wilderness terrain, hosts three of the African Big Five and five of the Dangerous Seven. Hunting is carefully managed and conducted in the spirit of fair chase with only mature, quality specimen harvested by means of walk and stalk. Blinds and hides provide bow hunters as well as rifle hunters with various opportunities, thereby catering to both disciplines.

Ingwe-Inyati Lodge is a true gem - an incredible cliff top structure built from stone and Tambuki thatch crowned with every luxurious modern amenity to enthrall and pamper any travel connoisseur. Incredible views across the water may delight guests with elephant and sable sightings. Pamper yourself with a dip in the pool and open air jacuzzi or unwind in the sauna. The three private one-bed chalets are beautifully designed with a king size bed, private patio and outdoor shower. The fourth chalet is opulent with two en-suite bedrooms, lounge, kitchenette and patio. The closest port of entry is Johannesburg International which is situated approx. 3 hours drive from the lodge. The airstrip and secure aircraft parking also allow quick access to the area.

- 33,000 acres (12,500 hectare)
- Four luxury air-conditioned rooms with ensuite bathroom
- Thatched lounge, bar and dining area
- Pool, jacuzzi and sauna
- Wi-Fi, electricity, mobile reception, air-conditioning and laundry
- 185 miles from OR Tambo International Airport (JNB)
- Private airstrip





RIETVALEY GAME RANCH

Few places have retained the ability to transport one to a distant world of unexplored wonders. Tucked away between the mountainous mixed bushveld of Mpumalanga, lies a remnant of such natural beauty. Rietvaley Game Ranch is within a 4-hour drive from Johannesburg, en-route to the Kruger National Park. The property exhibits a wide array of different habitats, from a grassland mountain plateau draining into several kloof forests surrounded by dense savannah woodland and an 8 km front to the Spekboom river. The off-the-grid bush camp, Wildekraal, is minimalistic yet comfortable with the most amazing views towards the western mountain range. It can host up to 13 guests. The outside firepit, cabins and open air shower allow one to connect with the wild natural environment of this beautiful and kind retreat.

Rietvaley has numerous plains game species including big kudu, impala, nyala, klipspringer, duiker, zebra, baboon, warthogs, waterbuck, common reedbuck, wildebeest and bushbuck. Dangerous game include leopard and buffalo. Is is perfect for both rifle and bow hunting.

- 15,000 acres (7,000 hectares)
- Six thatched cabins with ensuite bathroom
- Lounge, bar and dining room
- Outside fire pit
- Wi-Fi, solar power and daily laundry
- 190 miles from OR Tambo International Airport (JNB)
- Malaria low risk area

TROPHY GALLERY - SOUTH AFRICA 2022





UGANDA

THE PEARL OF AFRICA

Known as the Pearl of Africa, Uganda is blessed with an extraordinary variety of specialty game that promises an unforgettable and highly satisfying hunting experience. Specialty game animals include a variety of endemic species, such as Uganda kob, Nile buffalo and Jackson's hartebeest. Although not endemic to Uganda, this is the prime location to collect exceptional East African sitatunga.

Although landlocked, Uganda contains many large lakes. The southern part of the country includes a substantial portion of Lake Victoria, within which it shares borders with Kenya and Tanzania. In addition to Lake Victoria, there are amongst others Lake Albert, Lake Edward, and the smaller Lake George. Uganda, like many African countries, is home to the Dangerous Seven. However, the only big game that are legally permitted to be hunted are Nile buffalo, hippo, crocodile and occasionally leopard. Uganda is hunting destination best suited for the individual who are a species collector, in search of unique endemic plains game species found nowhere else on the continent.

Port of Entry: Entebbe International Airport (EBB)

Hunting season: All year round. Driest period is December to April.

Import of guns: Maximum of 2 firearms and
60 rounds of ammunition per firearm

Malaria Risk: High risk area and Yellow fever vaccination mandatory

Dangerous game: Nile Buffalo, Hippo and crocodile (if available)

Best suited for: Nile Buffalo, East African Sitatunga and Uganda Kob.





ZIMBABWE

CHAPUNGU-KAMBAKO ZIMBABWE

The untamed environment of this unique country makes Zimbabwe still one of Africa's top safari destinations. It has a rich hunting history with stories from legendary hunters and explorers such as Selous, Roosevelt and Livingstone, contributing to its famous old-style African safari ambience. Formerly known as Rhodesia, Zimbabwe is a landlocked country in southern Africa between the Zambezi and Limpopo rivers. There are three major ports of entry: Harare, Bulawayo and Victoria Falls. Travellers to Zimbabwe can enjoy pleasant hunting season climates with winters being dry, sunny and average day temperatures of around 60°F. It is a country filled with excellent species and is renowned for its dangerous game.

Port of Entry: Bulawayo Airport (BUQ) or Victoria Falls Airport (VFA)

Hunting season: May to November

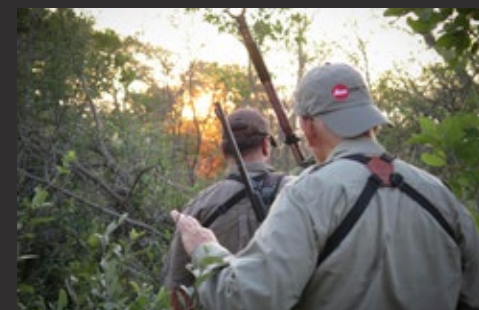
Import of guns: Maximum of 4 firearms and
100 rounds of ammunition per firearm

Dangerous game: Elephant, Lion, Leopard, Buffalo, Hippo & Crocodile

Best suited for: Big elephant safari

MATETSI / FORESTRY AREAS

The Matetsi Safari Area situated in north-western forest areas of Zimbabwe is one of the oldest and best-known hunting safari ground. This is predominantly a big game safari area with exceptional elephant, lion, leopard and buffalo trophies being harvested. Access is by commercial flight through Victoria Falls from where it is a 2-hour drive.





TSHOLOTSHO

Sharing a 47-mile unfenced border with the Hwange National Park, this area's name is derived from the early San inhabitants' word "Tsoro o tso" meaning the head of an elephant. This is still true to the region as it is in our opinion the best area in Africa to hunt big elephant bulls. This enormous area also has fantastic potential for lions, leopard, buffalo and limited plains game.

- 400,000 acres of Mopane woodland and seasonal wetland
- Four canvas tented bungalows with en-suite bathroom
- Thatched lounge, bar and dining area
- Wi-Fi, electricity and daily laundry
- 4-hour drive from Bulawayo International Airport (BUQ)
- Malaria high-risk area

NGAMO SIKUMI

Also sharing an open border with the Hwange National park, Ngamo supports a prolific and diverse number of plants, birds and animal species. Game to hunt include lion, leopard, buffalo and large numbers of plains game such as sable, blue wildebeest, zebra, kudu and eland.

- 1,900,000 acres of woodlands with seasonal wet- and grasslands
- Four thatched bungalows with en-suite bathrooms
- Thatched lounge, bar and dining area
- Wi-Fi, electricity and daily laundry
- 3-hour drive from Bulawayo International Airport (BUQ)
- Malaria high-risk area

TROPHY GALLERY - ZIMBABWE





SAFARI GUIDE

HUNTING AFRICA

Permits and licences

Each hunter is required to have a hunting licence issued in his/her name by the respective country's legal authority. Additional CITES and/or TOPS permits are required for certain species such as lion, rhino, hippo etc. We obtain this on our client's behalf and the cost will be indicated on the quote and contract.

Firearms and Ammunition

For thick-skinned dangerous game we recommend a .375 – .416 with 20 soft rounds and 20 solid rounds. For general plains game, a calibre between .270 to .300 with 40-60 rounds of ammunition is suggested as generally suitable for most hunts. Should a hunter wish not to bring his/her own rifle on the safari then there are camp rifles and ammunition available for their use at an additional cost. It is advisable to take out full insurance for all firearms before travelling anywhere in Africa. Ensure that your ammunition is in a separate lockable container from your rifle. Each country we operate in has its own temporary firearm import legislation that must be adhered to by all hunters. Please inquire for more detailed information.

Preparation of Trophies

Skinning of trophies and field preparation is included in our services, however all trophy collection, dipping, taxidermy work, packing, and shipping of trophies are not included. We make use of Life Form Taxidermy for all further taxidermy related processes and exportation of trophies.
(www.lifeformtaxidermy.com)

TERMS AND CONDITIONS

Booking and Payment

Bookings are confirmed on receipt of the signed safari contract and 50% of the total daily rate, unless otherwise specified. The balance due (balance of the daily rate, trophy fees of reserved animals and all extras) is payable 60 days prior to the commencement of the safari. Trophy fees of any animals killed/wounded and any extra expenses incurred during the trip, are payable at the conclusion of the safari and can be paid in cash in camp or by electronic bank transfer. Any unused credits will be refunded within 30 days of the safari end date. Any other payment arrangement must be authorized in writing. Prices are as per the current price list or as otherwise specified. Prices are subject to change without prior notice. VAT and/or Government Tax is payable on all daily rates, wounded or non-exported animals, transfers, rifle hire and private charters.

Cancellation Policy

There will be no refund of any deposit paid within six (6) months prior to the hunt taking place. If cancelled longer than 6 months prior to this date, 50% of the deposit will be refunded.

Indemnity

It must be noted that hunting is a dangerous vocation and although Chapungu-Kambako Safaris are committed to your safety, comfort and enjoyment, we cannot be held responsible for any accidents, illness or death that may occur whilst on the safari.

TRAVEL

Entry and Visa Requirements

Travellers must have a valid passport that is valid until 6 months after the initial date of travel and has at least one blank page for endorsements, a valid visa (if required), a return/onward ticket and a yellow fever certificate (if required). Requirements for visitor's visas differ between countries and they are subject to change. All visitors must check with their destination's nearest consulate or embassy in their country of origin, on entry regulations and obtaining a visa.

Travel Agent

It is advisable to make use of a travel agent when booking your international flights to Africa. Miriam Clingsmith at Frosch travel agency can assist with bookings:
miriam.clingsmith@frosch.com
+1-713-590-8138

Health and Travel Insurance

It is important to note that all hunting safaris are potentially dangerous and it is each client's own responsibility to arrange his/her medical, evacuation or personal insurance. We recommend Ripcord Comprehensive Travel Protection (www.ripcordtravelprotection.com) as a preferred travel insurer. Each hunter is advised to bring a small personal medical kit with necessary preferred medication for headaches, colds, burns, allergies etc. It is advisable to take malaria prophylactics before arriving in any high-risk malaria area. Adequate clothing as well as mosquito repellent are important to minimize mosquito bites. Tsetse flies are only present in the Niassa Reserve in Mozambique, but pose little to no risk of acquiring African trypanosomiasis (sleeping sickness).



LIFE - FORM
TAXIDERM Y

Realism · Beauty · Permanence
Guardian of the Hunters' Dreams



CHAPUNGU-KAMBAKO SAFARIS

The Bigger side of Big game hunting!

OFFICE

+27 21 200 7939

sales@chapungu-kambako.com

JACQUES HARTZENBERG

+27 82 554 2304

jacques@chapungusafaris.com

JUMBO MOORE

+27 73 489 4019

jumbo@kambakosafaris.com

NICOLAI RAUBENHEIMER

+27 82 424 9195

nicolai@chapungusafaris.com

UYS SCHICKERLING

+264 81 303 0083

uys@chapungu-kambako.com

FOLLOW US:



www.chapungu-kambako.com

